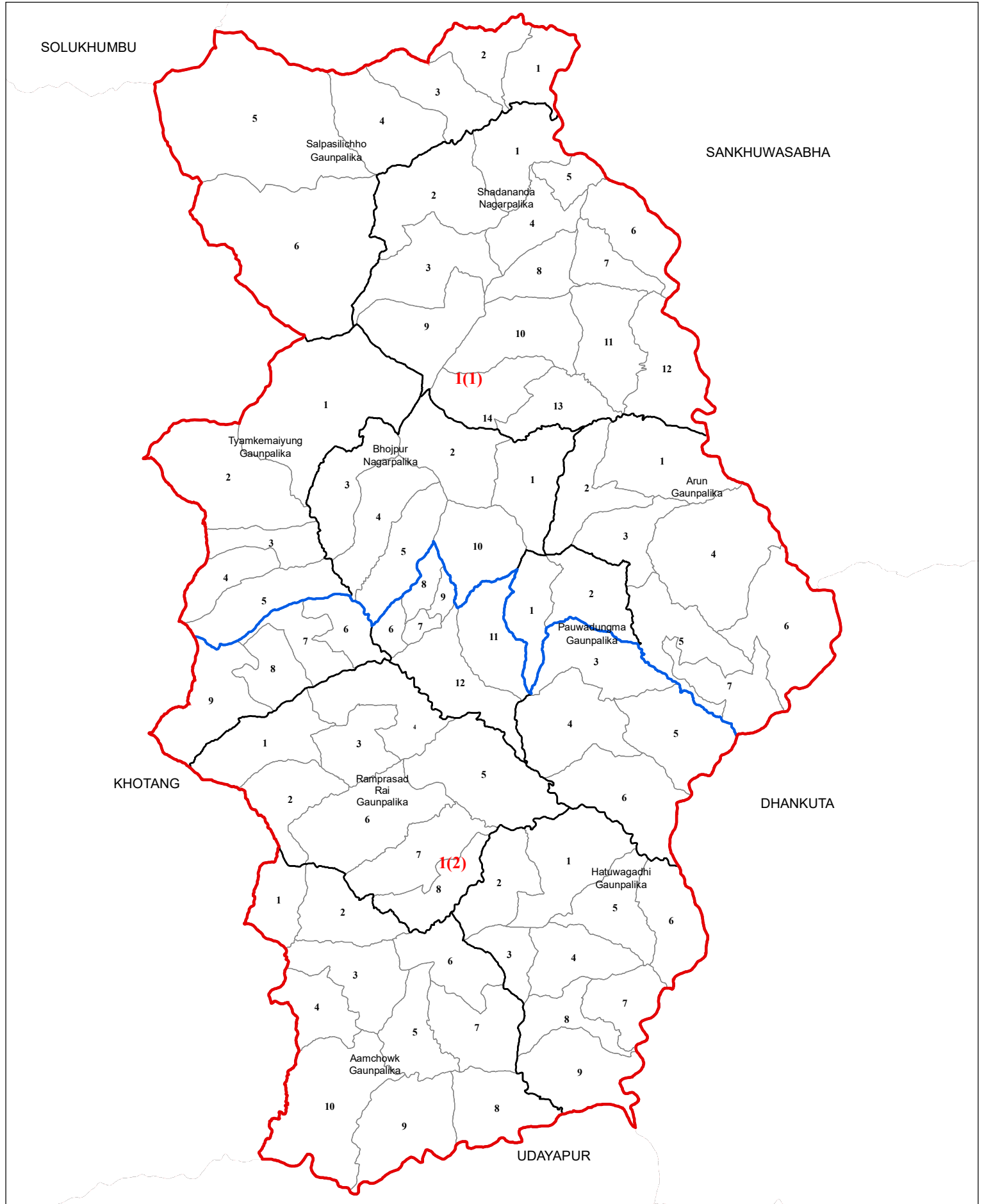
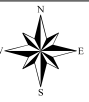


# BHOJPUR

No. of House of Representative Constituency: 1

No. of Provincial Constituency : 2



**Legend**

- International Boundary
- Province Boundary
- District Boundary
- House of Representative Boundary
- Provincial Constituency Boundary
- Palika Boundary
- Ward Boundary
- Sanskritik Area
- National Park/Wildlife Reserve/Hunting Area/Watershed Area

0 2.25 4.5 9 13.5 18 Km

Spatial Data Source : Survey Department  
 Population Data Source : Population Census 2011, CBS  
 Government of Nepal

**Note:**  
 1 in 1(1) indicates House of Representative Constituency Number and (1) indicates Province Constituency Number within the House of Representative Constituency Number and likewise.

