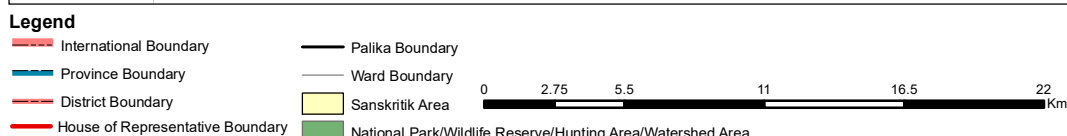
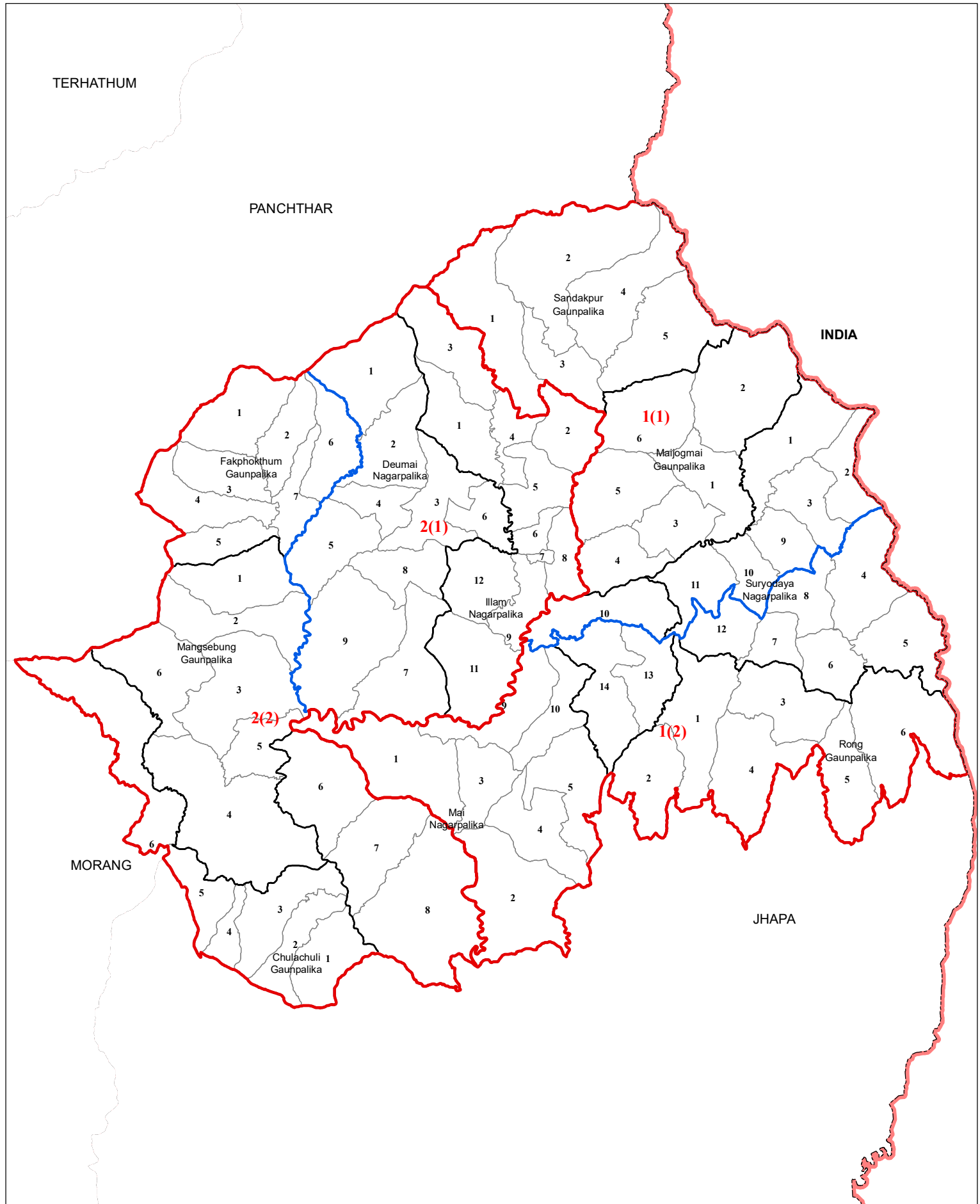


# ILAM

No. of House of Representative Constituency: 2

No. of Provincial Constituency: 4



Spatial Data Source : Survey Department  
 Population Data Source : Population Census 2011, CBS  
 Government of Nepal

**Note:**  
**1** in **1(1)** indicates **House of Representative Constituency Number** and **(1)** indicates **Province Constituency Number** within the House of Representative Constituency Number and likewise.

