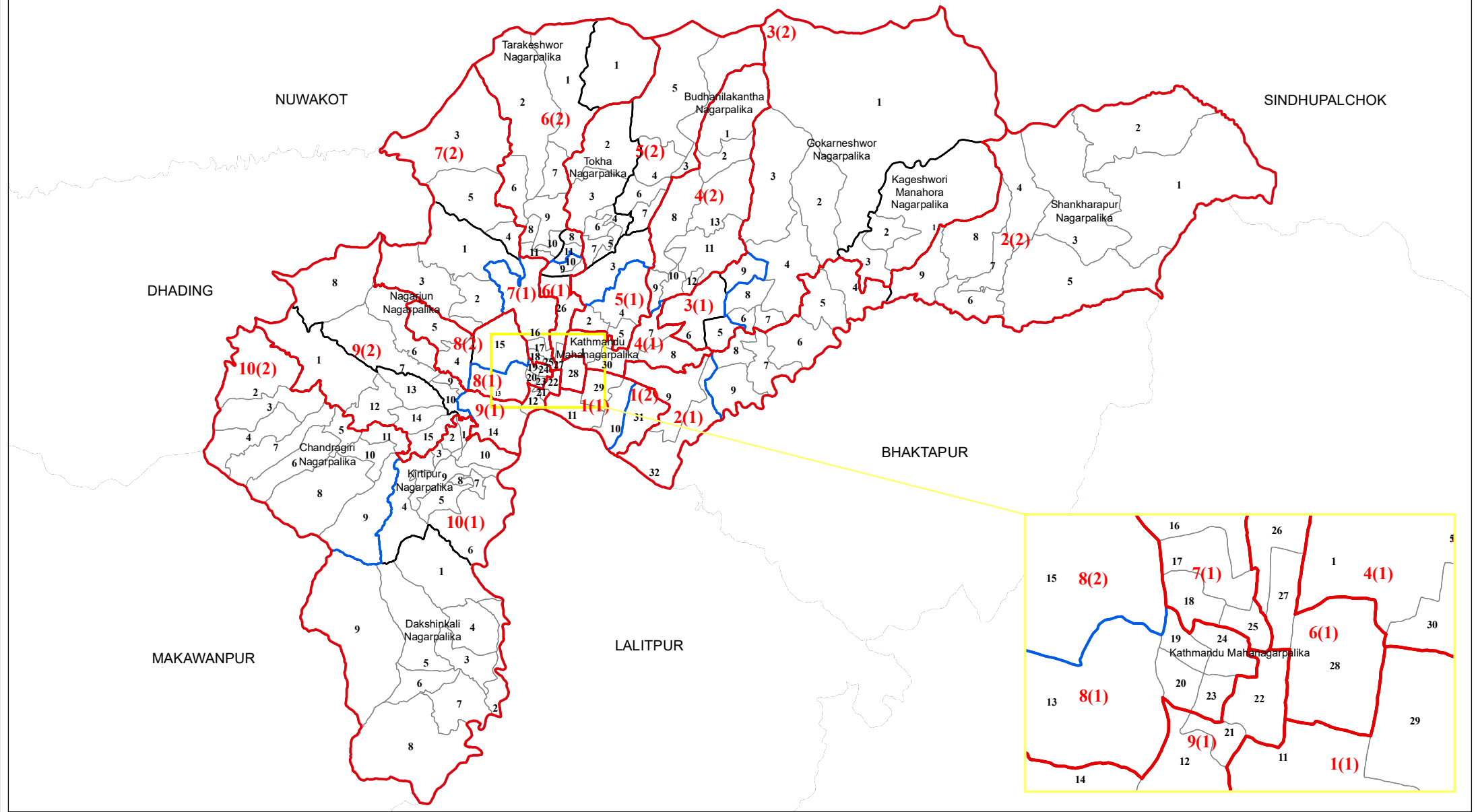


KATHMANDU

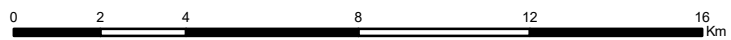
No. of House of Representative Constituency: 10

No. of Provincial Constituency : 20



Legend

- International Boundary
- Palika Boundary
- Province Boundary
- Ward Boundary
- District Boundary
- Sanskritik Area
- House of Representative Boundary
- National Park/Wildlife Reserve/Hunting Area/Watershed Area
- Provincial Constituency Boundary



Note:
 1 in 1(1) indicates House of Representative Constituency Number and (1) indicates Province Constituency Number within the House of Representative Constituency Number and likewise.

Spatial Data Source : Survey Department
 Population Data Source : Population Census 2011, CBS
 Government of Nepal

