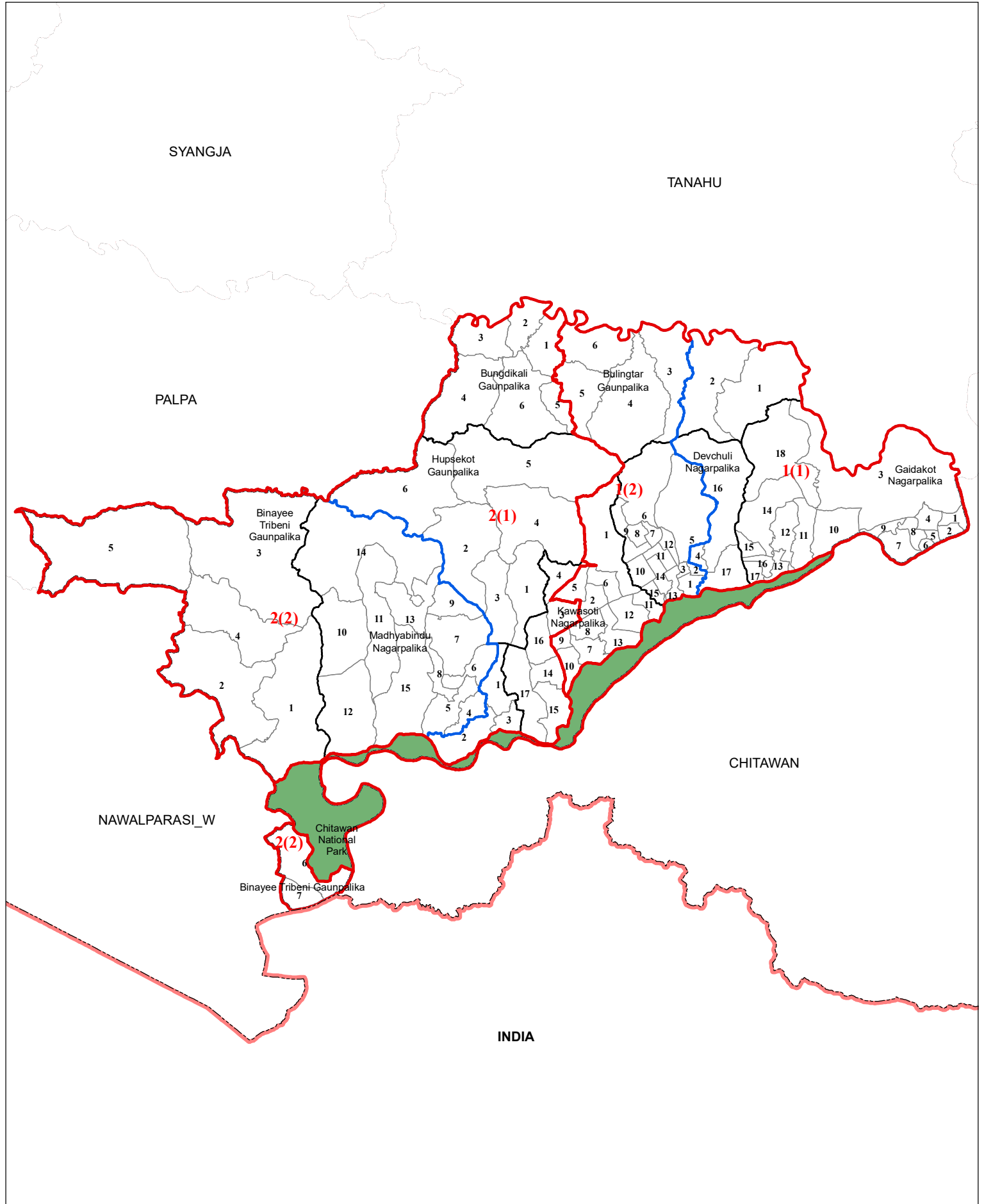
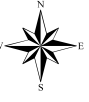


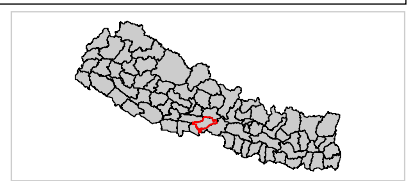
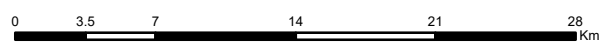
NAWALPARASI_E

No. of House of Representative Constituency: 2

No. of Provincial Constituency: 4



- Legend**
- International Boundary
 - Province Boundary
 - District Boundary
 - House of Representative Boundary
 - Provincial Constituency Boundary
 - Palika Boundary
 - Ward Boundary
 - Sanskritik Area
 - National Park/Wildlife Reserve/Hunting Area/Watershed Area



Note:
1 in **1(1)** indicates House of Representative Constituency Number and **(1)** indicates Province Constituency Number within the House of Representative Constituency Number and likewise.

Spatial Data Source : Survey Department
 Population Data Source : Population Census 2011, CBS
 Government of Nepal

Prepared By : Electoral Constituency Delineation Commission (ECDC), 2074